

Installing Guide For E8041 Lexus ES350

1. The original car entertainment effect. Prize up the decorate board on the right side by the plastic knife.



2. Prize up the decorate board on the left side at the same method, prize up the wind letout too.



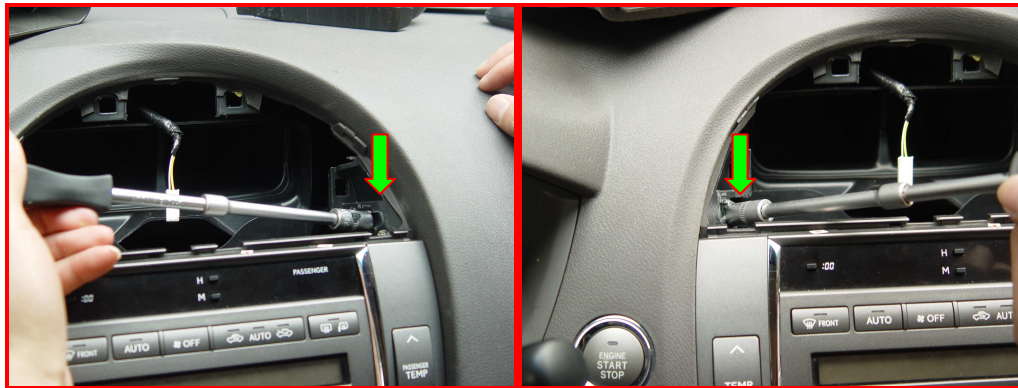
3. Prize up the wind letout by the plastic knife.



4. Take out the wind letout after prize it up.



5. Loosen the screws.



6. Take out the main unit by your hands, then loosen the screws of the bracket.



7. Prize up the console board by the plastic knife, then prize up the 6 CDC module and fix it to the FLYAUDIO main unit.



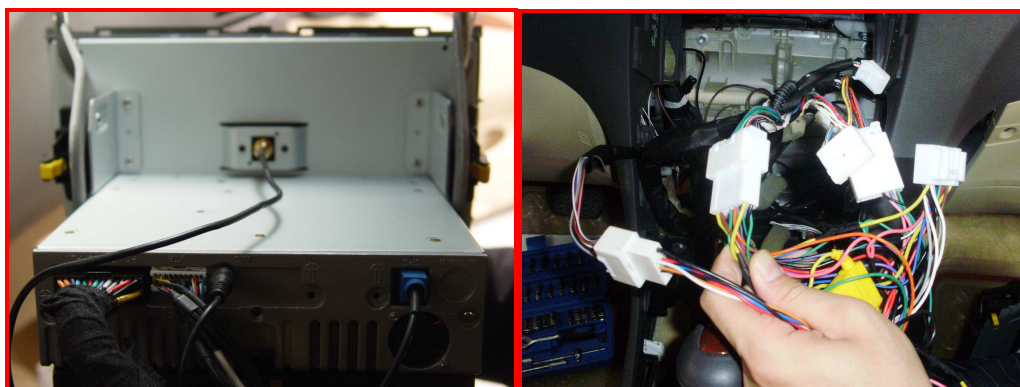
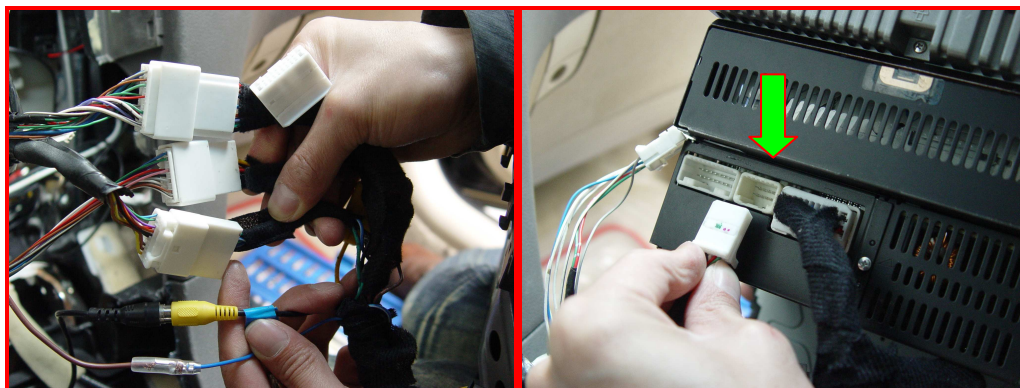
8.The 6CDC fixing in the FLYAUDIO main unit,then fixing the screws of the bracket.



9.After fix the screws of the bracket, connect the special cables.



10.Connect the special cables.



11.Fixing the FLYAUDIO main unit after connect the special cables well,and the

outlook of the car entertainment effect after the installation of the FLYAUDIO main unit.



12.The extension FLYAUDIO display screen of the back entertainment.

